

The first printing of the Lawrenceville Press text, *A Guide to Web Development Using Adobe Dreamweaver CS3*, can be used with Adobe CS4 software by following the notes listed below:

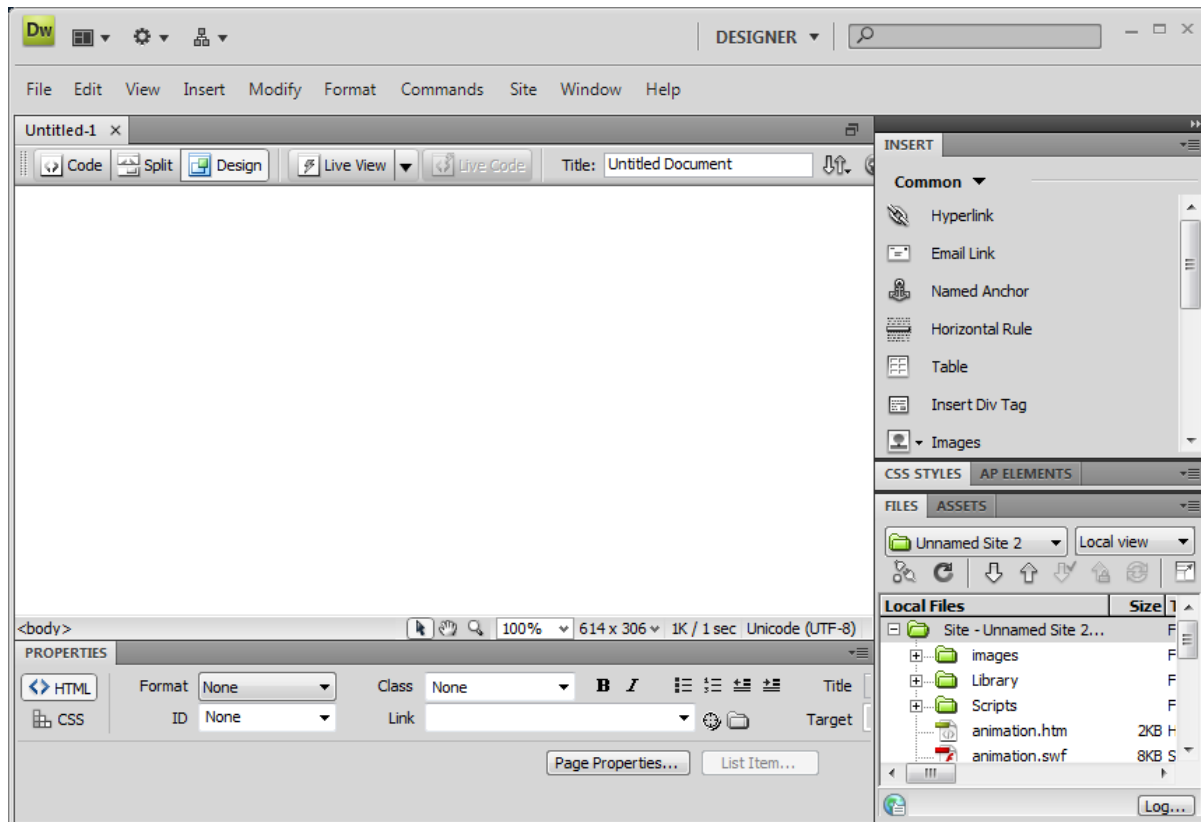
Chapter 3

Page What's Different In Dreamweaver CS4...

71 Starting Dreamweaver icon



71 The workspace appears as:



Page	What's Different	In Dreamweaver CS4...
71	Insert panel	The Insert panel is displayed as a panel on the right side of the screen.
85	Checking Spelling	Select Commands > Check Spelling to check spelling.
86	Step 5b	Select Commands > Check Spelling .
95	Dreamweaver Site Map	This feature has been removed from CS4.
96	Computer Ergonomics – part 8	Skip this Practice in CS4.

Chapter 5

Page	What's Different	In Dreamweaver and Fireworks CS4...
167	Aligning an Image	The alignment buttons have been removed from the Property Inspector and replaced with an Align drop-down list.
168	Step 1c	In the Property Inspector, select Absolute Middle in the Align list.
169	Starting Fireworks icon	

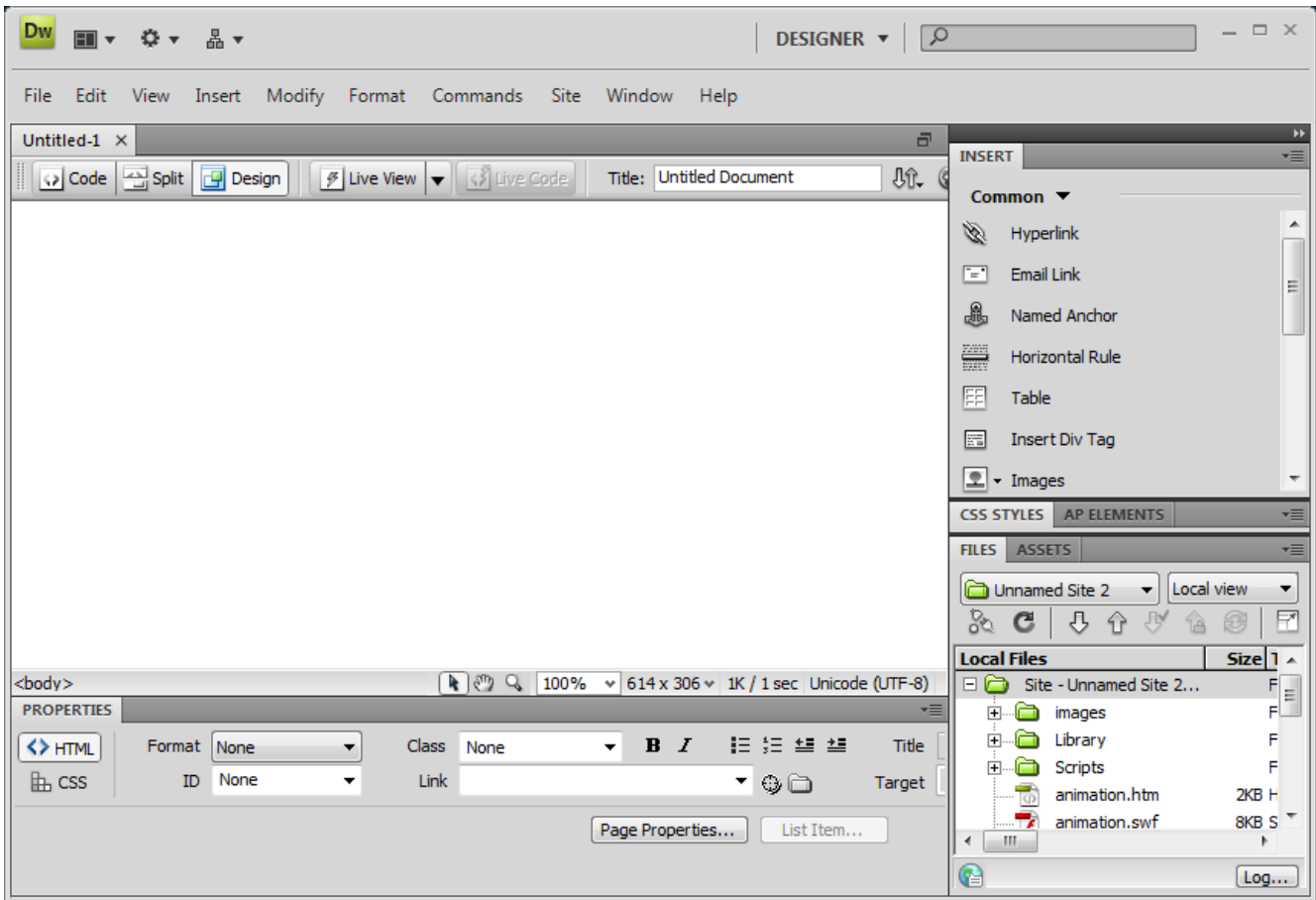


Page What's Different

In Fireworks CS4...

170 The Fireworks interface

The interface appears as:

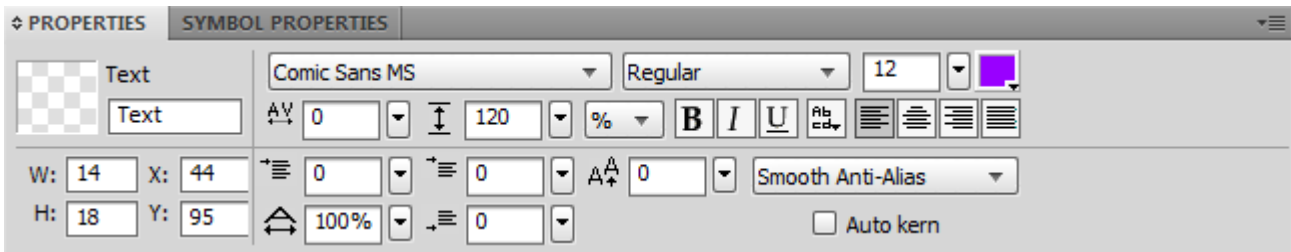


172 Text tool

The Text tool appears as

Property inspector

When a text box is selected, the Property inspector appears as:



177 Step 3a

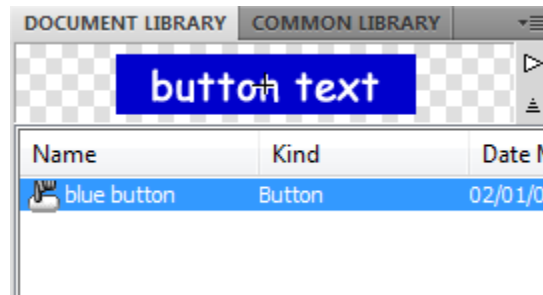
The Text tool appears as

Page **What's Different**

In Dreamweaver CS4...

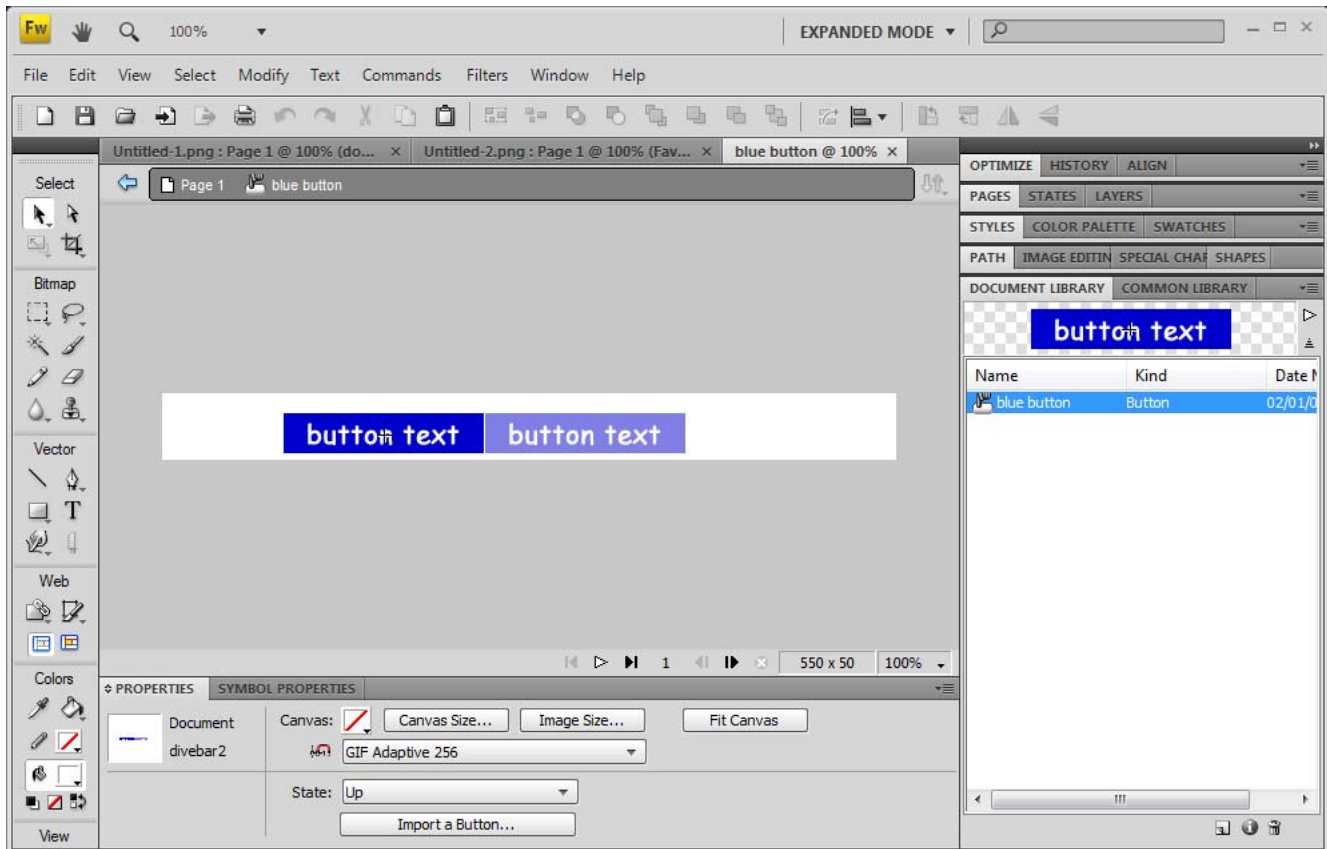
180 Library

The Library is located in the Document Library panel and appears as:



182 Button editor

The Button editor appears as:



- The button states are now found in the Property inspector.
- The instructions area has been removed.

183 Step 1g

The Text tool appears as

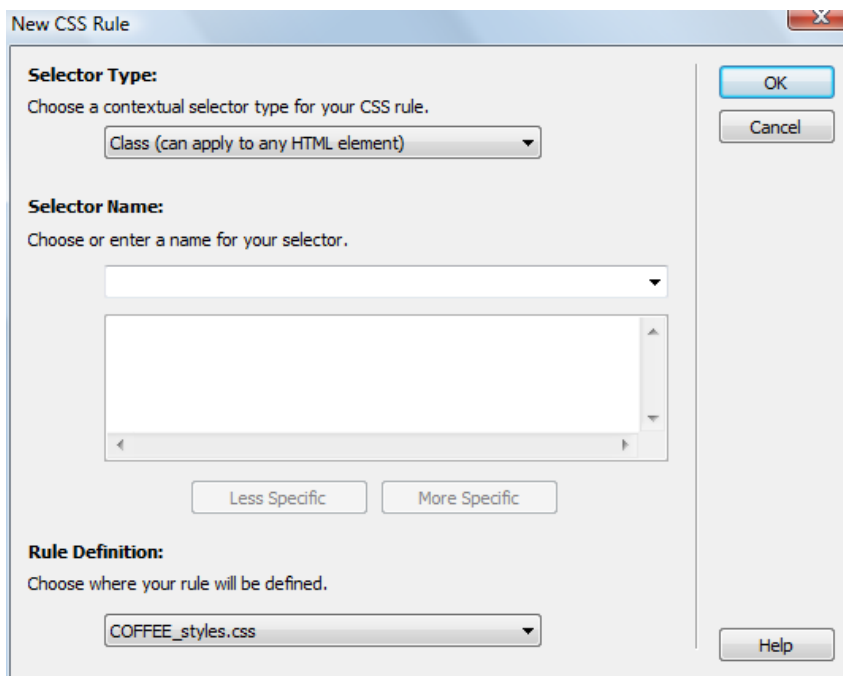
184 Step 3b3

...which is added to the **Document Library**

Page	What's Different	In Fireworks CS4...
185	Step 6b	In the Button Editor's Property Inspector, select Over from the State list.
186	Step 7a	In the Button Editor's Property Inspector, select Down from the State list.
186	Step 7g	In the Button Editor's Property Inspector, select Over While Down from the State list.
	Step 7i	In the Button Editor, click Page 1
188	Tag panel	The Tag panel is now called the Tag Inspector panel
191	Step 7d	In the Tag Inspector panel , select...

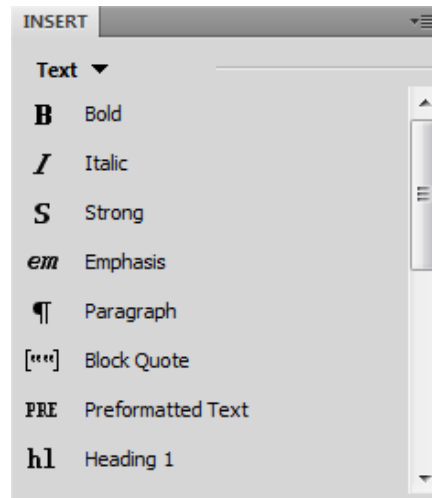
Chapter 6

Page	What's Different	In Dreamweaver CS4...
215	Text menu	The Text menu is called the Format menu.
220	New CSS Rule dialog box	The dialog box now appears as:



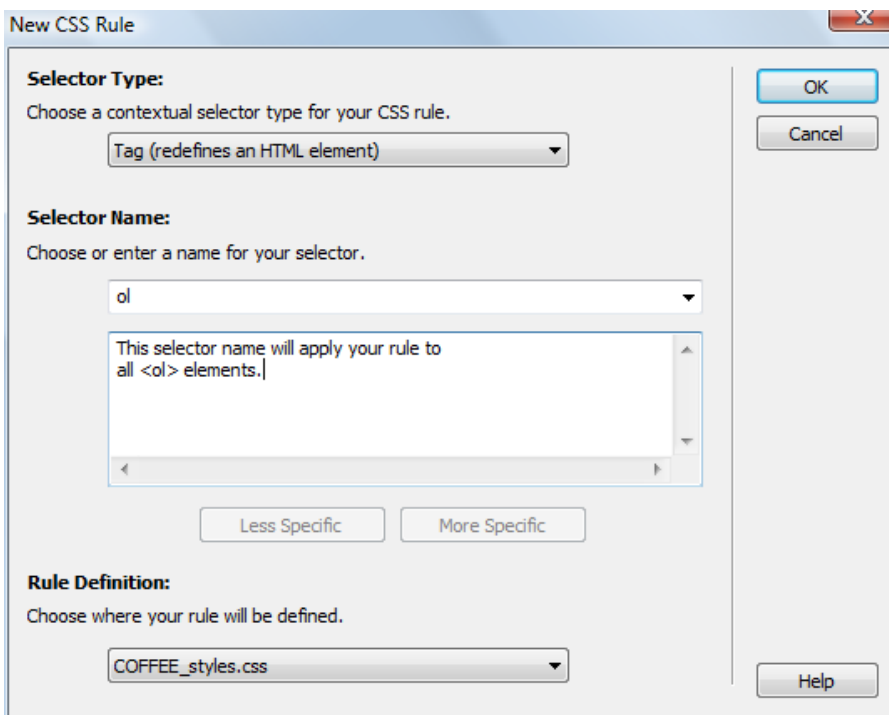
228 Text category

The Text category in the Insert panel will appear on the right side of the Design window:

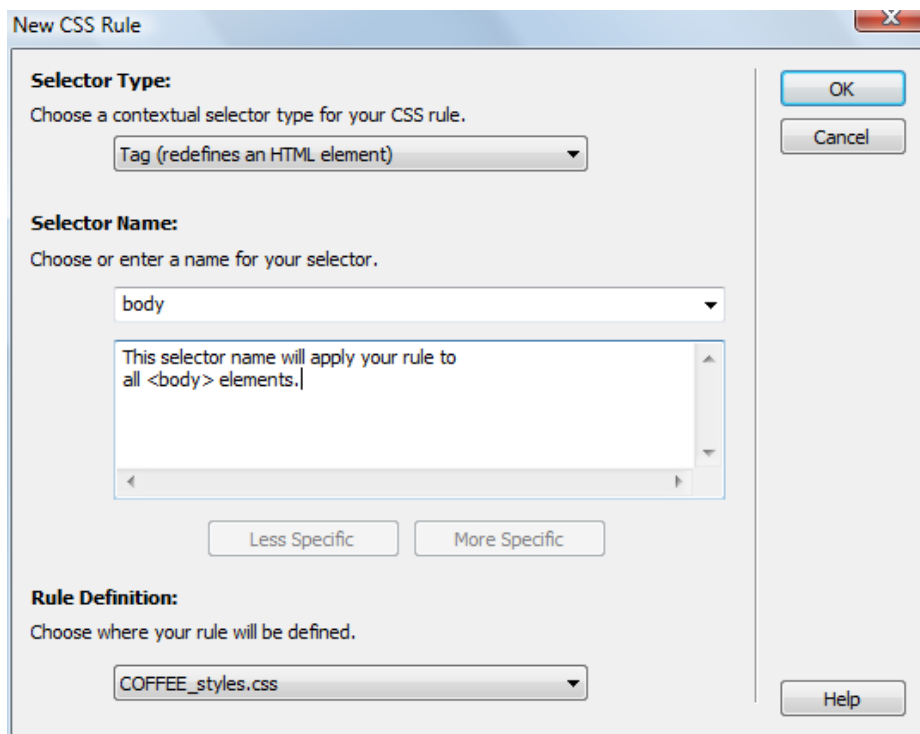


232 Step 3a

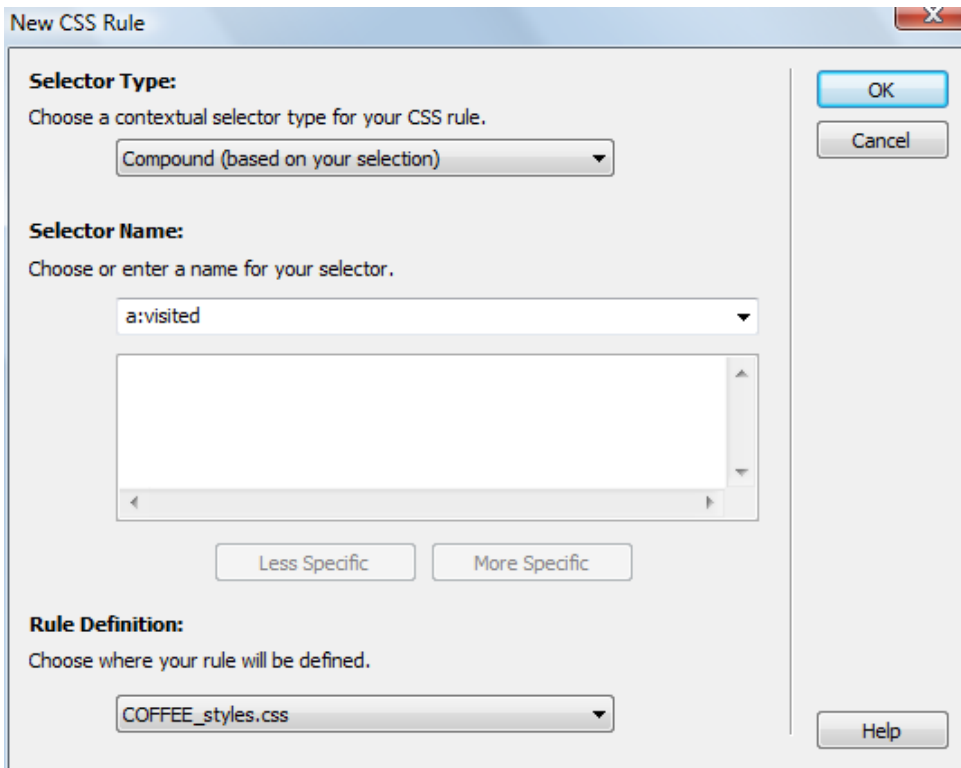
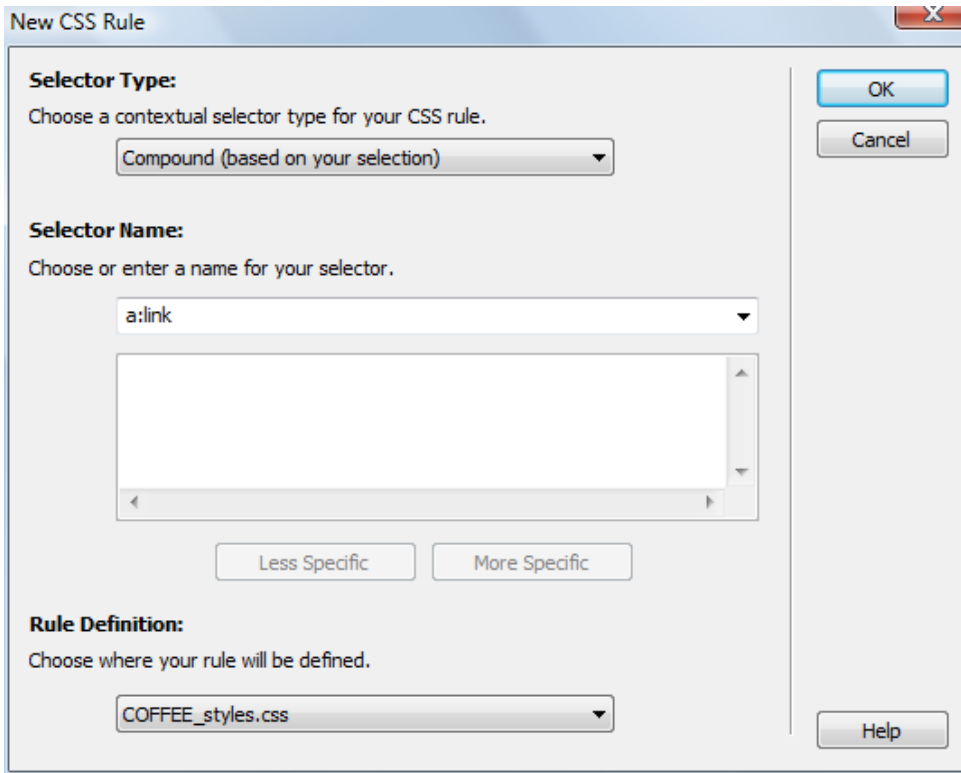
The dialog box will appear as:

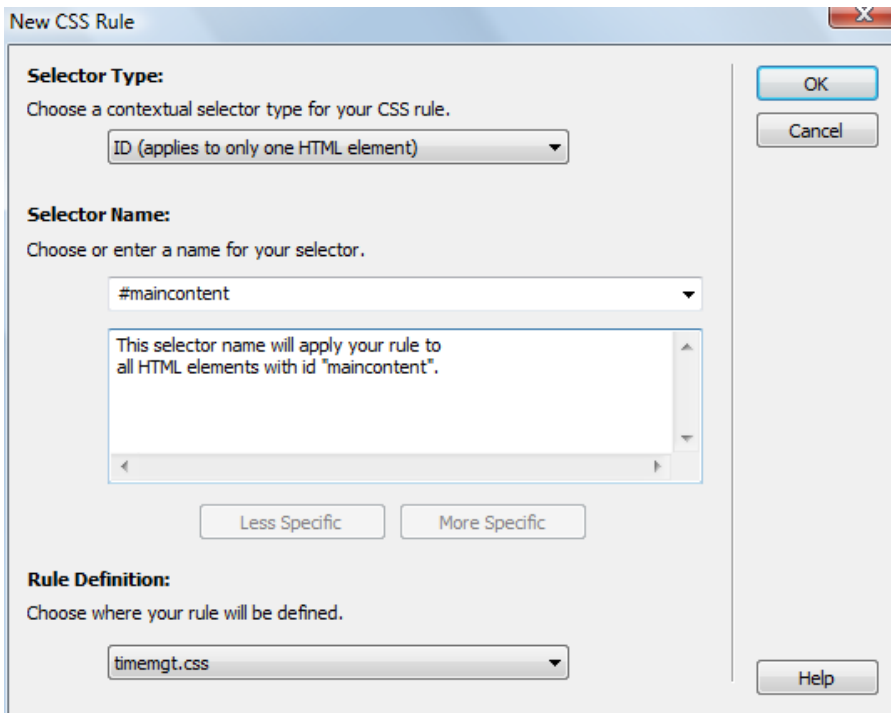
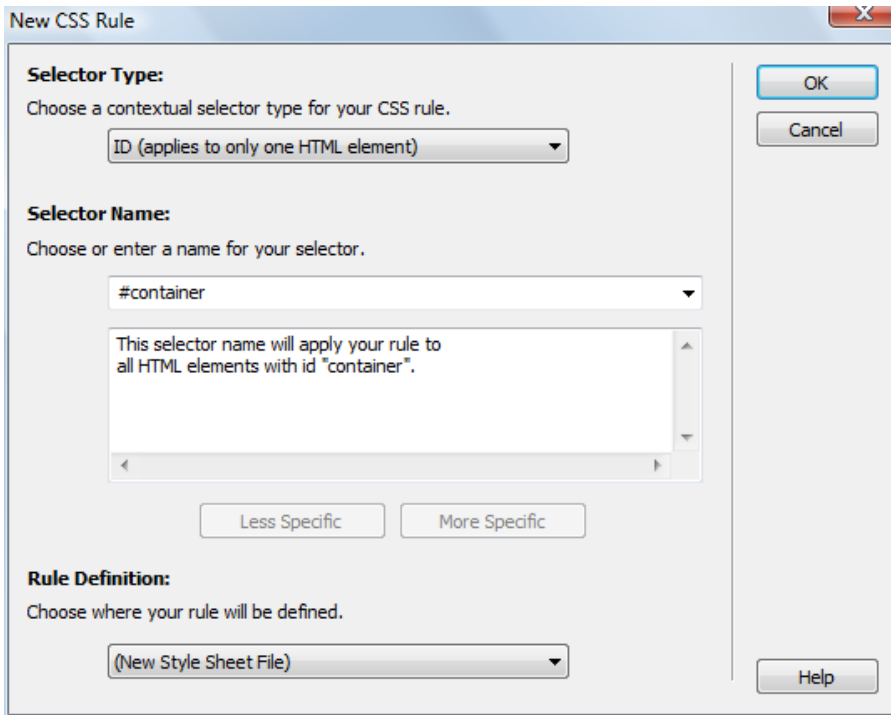


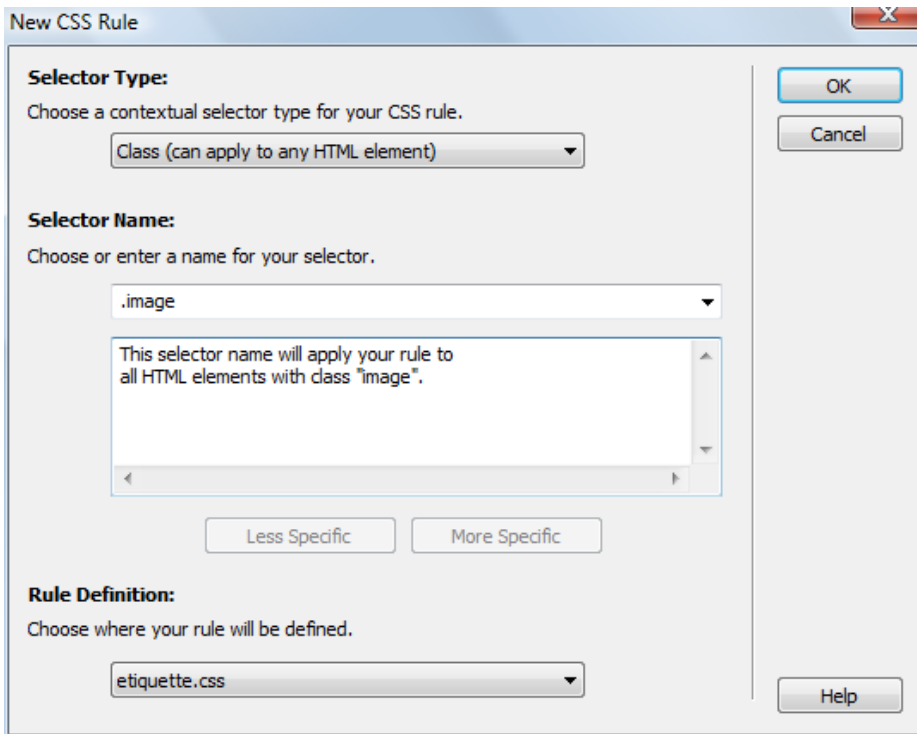
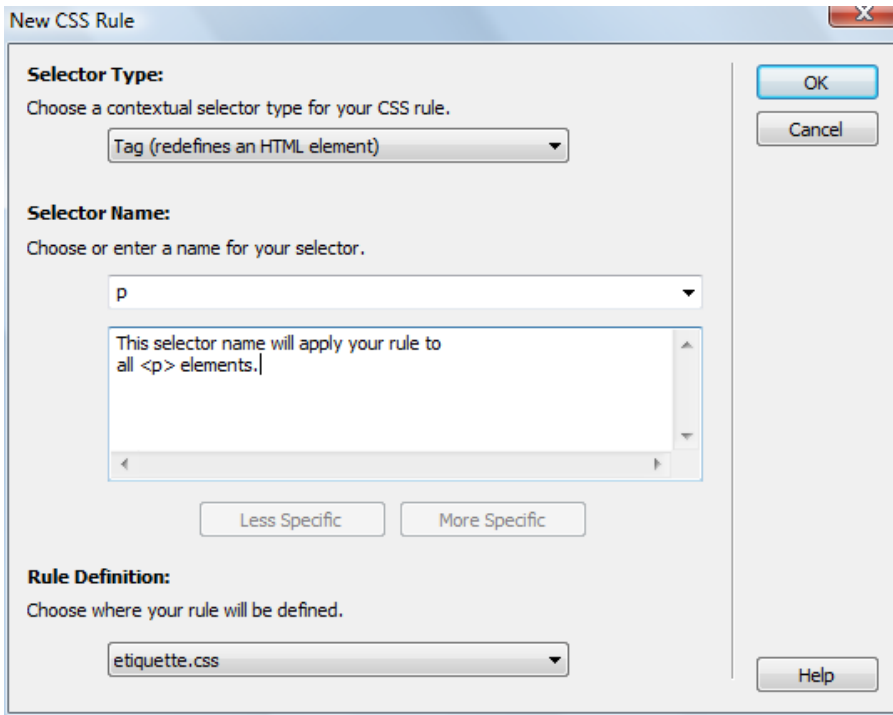
The dialog box will appear as:



The **Compound** selector type is now selected.







Chapter 7

Page What's Different

In Dreamweaver/Flash CS4...

266 Flash Buttons

This feature has been removed. Skip pages 266-270.

271 Flash Text

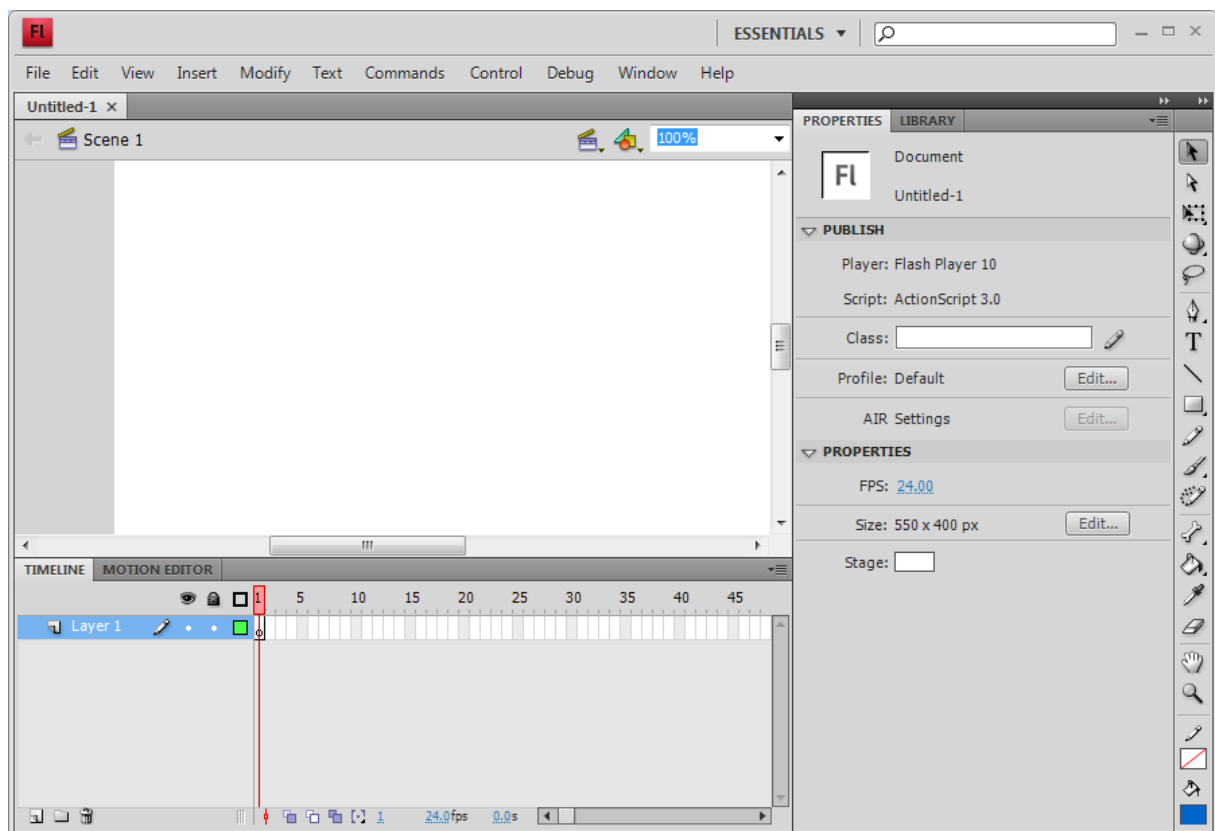
This feature has been removed. Skip pages 271-end of the Practice on page 273.

274 Starting Flash icon



274 Flash interface

The interface appears as:



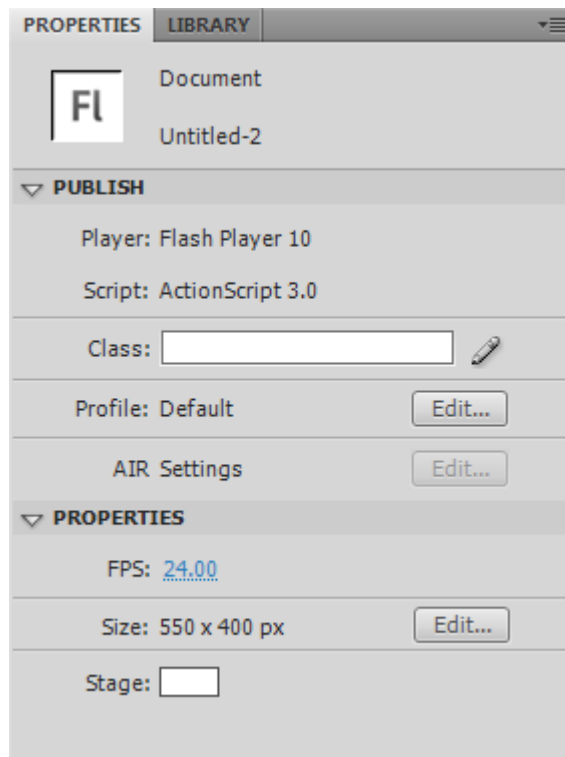
- The Tools panel is on the right side of the interface
- The Timeline is located under the stage
- The Property inspector is on the right side of the interface

Page **What's Different**

In Dreamweaver CS4...

276 Property inspector

The Property inspector appears as a panel:



281 Export Flash Player dialog box

This dialog box is not displayed.

283 Step 1a6

Skip this step.

284 Shape Tweening

The steps to create a shape tween:

1. Create an image in the first keyframe.
2. Click a frame on the Timeline and select **Insert > Timeline > Insert Blank Keyframe**.
3. Select a new fill color and then create an image on the right side of the blank stage.
4. Right click between the frames and select **Create Shape Tween**.
5. Preview the animation.
6. Export the document.

285 Step 2f

...select **Insert Blank Keyframe**...

Step 2g

Skip this step.

Step 2m

Right-click frame 10 and select **Create Shape Tween**.

287 Motion Tweening

Steps 4 and 5 should be combined to read:
Right-click a frame between the keyframes and select **Create Classic Tween**.

290 Step 5a and 5b

...right-click frame 12 and select **Create Classic Tween**.

293 Steps 7 and 8

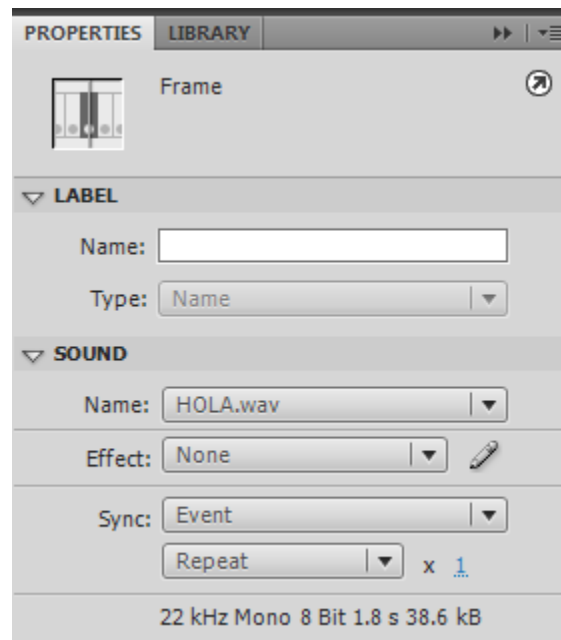
Right-click between the frames and select **Create Classic Tween**.

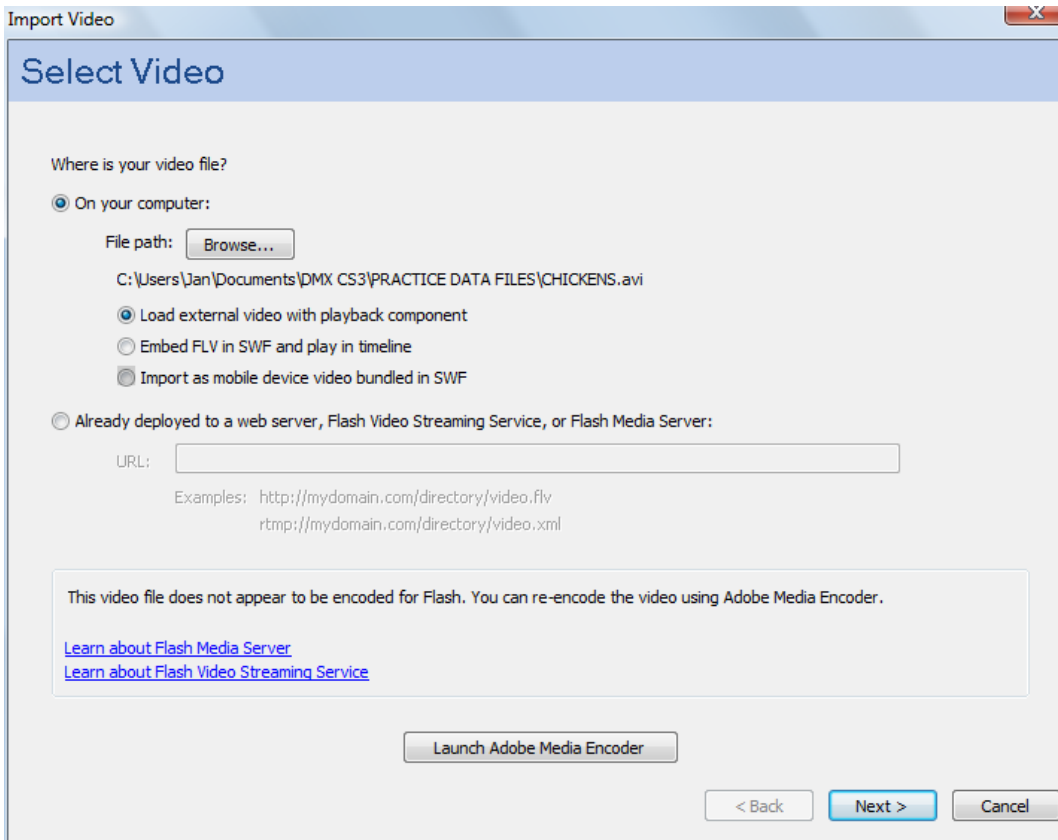
294 Step 2n

...right-click frame 12 and select **Create Classic Tween**.

295 Properties panel

The Properties inspector appears as a panel:





The Deployment and Encoding dialog boxes will not be displayed.

Chapter 9

Page **What's Different**

In Dreamweaver CS4...

351 Step 2b

Select **Commands > Check Spelling.**